

KEDIA ADVISORY



DAILY BULLION REPORT

18 Nov 2024

- BULLDEX
- GOLD
- SILVER



Kedia Stocks & Commodities Research Pvt. Ltd.

Research Advisory | White Labelling | Digital Marketing



BULDEX SNAPSHOT

Commodity	Expiry	Open	High	Low	Close	% Change
MCXBULLDEX	26-Nov-24	18500.00	18500.00	18373.00	18416.00	-0.15
MCXBULLDEX	24-Dec-24	0.00	0.00	0.00	18499.00	-0.36

BULLION SNAPSHOT

Commodity	Expiry	Open	High	Low	Close	% Change
GOLD	5-Dec-24	74179.00	74284.00	73890.00	73946.00	-0.28
GOLD	5-Feb-25	74822.00	74896.00	74444.00	74526.00	-0.34
GOLDMINI	5-Dec-24	74191.00	74300.00	73900.00	73965.00	-0.25
GOLDMINI	3-Jan-25	74451.00	74605.00	74180.00	74253.00	-0.29
SILVER	5-Dec-24	89200.00	89666.00	88310.00	88421.00	-0.51
SILVER	5-Mar-25	91454.00	92000.00	90640.00	90790.00	-0.41
SILVERMINI	29-Nov-24	88979.00	89450.00	88123.00	88269.00	-0.16
SILVERMINI	28-Feb-25	91399.00	92100.00	90777.00	90918.00	0.38

OPEN INTEREST SNAPSHOT

Commodity	Expiry	% Change	% Oi Change	Oi Status
MCXBULLDEX	26-Nov-24	-0.15	-0.93	Long Liquidation
MCXBULLDEX	24-Dec-24	-0.36	0.00	Long Liquidation
GOLD	5-Dec-24	-0.28	2.21	Fresh Selling
GOLD	5-Feb-25	-0.34	1.59	Fresh Selling
GOLDMINI	5-Dec-24	-0.25	2.35	Fresh Selling
GOLDMINI	3-Jan-25	-0.29	0.39	Fresh Selling
SILVER	5-Dec-24	-0.51	0.24	Fresh Selling
SILVER	5-Mar-25	-0.41	-0.30	Long Liquidation
SILVERMINI	29-Nov-24	-0.39	-0.16	Long Liquidation
SILVERMINI	28-Feb-25	-0.37	0.38	Fresh Selling

INTERNATIONAL BULLION SNAPSHOT

Commodity	Open	High	Low	Close	% Change
Gold \$	2568.14	2575.57	2568.14	2571.45	0.62
Silver \$	30.31	30.41	30.31	30.40	0.88

RATIOS

Ratio	Price	Ratio	Price	Ratio	Price
Gold / Silver Ratio	83.63	Silver / Crudeoil Ratio	15.57	Gold / Copper Ratio	93.00
Gold / Crudeoil Ratio	13.02	Silver / Copper Ratio	111.20	Crudeoil / Copper Ratio	7.14

Important levels for Jewellery/Bullion Dealers



Booking Price for Sellers	Booking Price for Buyers
74256.00	73636.00
74466.00	73426.00



Booking Price for Sellers	Booking Price for Buyers
89141.00	87701.00
89901.00	86941.00



Booking Price for Sellers	Booking Price for Buyers
84.61	84.25
84.83	84.03

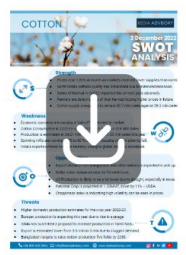


Booking Price for Sellers	Booking Price for Buyers
2590.00	2564.70
2602.90	2551.80



Booking Price for Sellers	Booking Price for Buyers
30.89	30.07
31.20	29.76

Click here for download Kedia Advisory **Special Research Reports**



Technical Snapshot



BUY GOLD DEC @ 73800 SL 73600 TGT 74100-74350. MCX

Observations

Gold trading range for the day is 73645-74435.

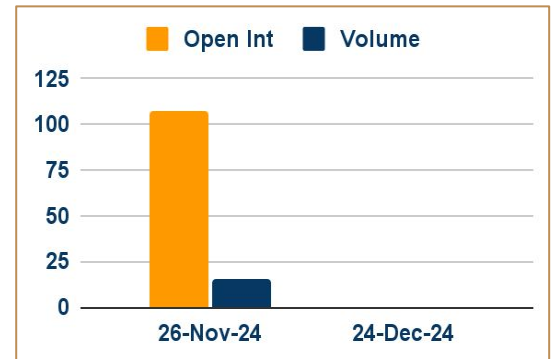
Gold prices dropped amid sticky US inflation and positive labor market data.

The US economy is in "remarkably good" shape, according to Fed Chair Powell.

Boston Fed president says December rate cut not a 'done deal'

The precious metal faces headwinds from the outlook for US interest rates and Trumponomics.

OI & Volume



Spread

GOLD FEB-DEC	580.00
GOLDMINI JAN-DEC	288.00

Trading Levels

Commodity	Expiry	Close	R2	R1	PP	S1	S2
GOLD	5-Dec-24	73946.00	74435.00	74190.00	74040.00	73795.00	73645.00
GOLD	5-Feb-25	74526.00	75070.00	74795.00	74620.00	74345.00	74170.00
GOLDMINI	5-Dec-24	73965.00	74455.00	74210.00	74055.00	73810.00	73655.00
GOLDMINI	3-Jan-25	74253.00	74770.00	74510.00	74345.00	74085.00	73920.00
Gold \$		2571.45	2579.43	2575.86	2572.00	2568.43	2564.57

Technical Snapshot



BUY SILVER DEC @ 88200 SL 87600 TGT 88900-89500. MCX

Observations

Silver trading range for the day is 87445-90155.

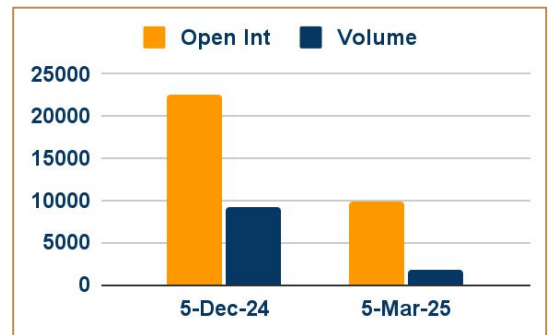
Silver prices dropped amid by a stronger dollar and rising yields.

Comments by Federal Reserve Chair Jerome Powell poured cold water on rate cut optimism.

The NY Empire State Manufacturing Index climbed to 31.2 in November 2024, up from -11.9 in October

Retail sales in the US increased 0.4% month-over-month in October 2024, following an upwardly revised 0.8% gain in September.

OI & Volume



Spread

SILVER MAR-DEC	2369.00
SILVERMINI FEB-NOV	2649.00

Trading Levels

Commodity	Expiry	Close	R2	R1	PP	S1	S2
SILVER	5-Dec-24	88421.00	90155.00	89290.00	88800.00	87935.00	87445.00
SILVER	5-Mar-25	90790.00	92505.00	91650.00	91145.00	90290.00	89785.00
SILVERMINI	29-Nov-24	88269.00	89940.00	89105.00	88615.00	87780.00	87290.00
SILVERMINI	28-Feb-25	90918.00	92590.00	91755.00	91265.00	90430.00	89940.00
Silver \$		30.40	30.47	30.43	30.37	30.33	30.27

Gold prices dropped amid sticky US inflation and positive labor market data, as well as upbeat comments from the Federal Reserve Chairman Jerome Powell. Powell said the Fed would not need to not take such an aggressive approach to cutting interest rates given the US economy was doing "remarkably well". Federal Reserve Bank of Boston President Susan Collins said that another rate cut in December is on the table, but it is not a "done deal".

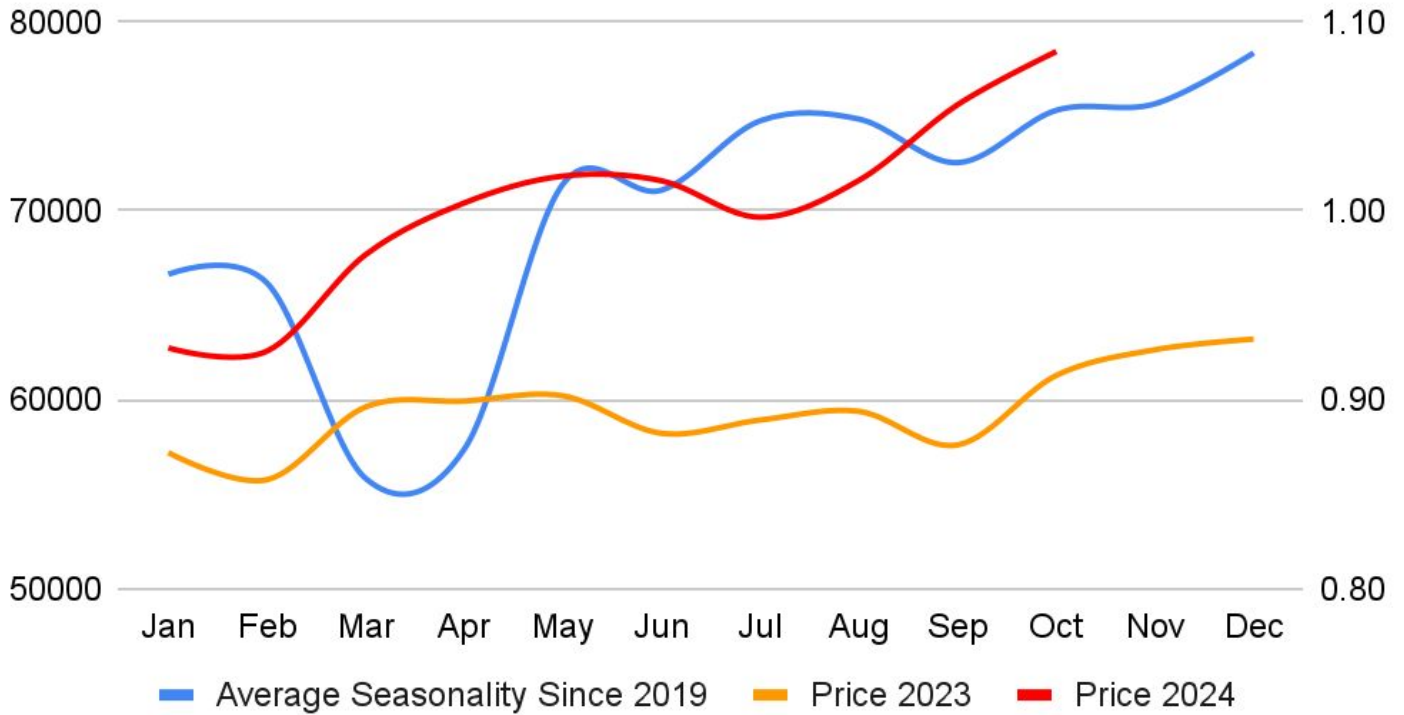
Asia Gold - India premiums reach 4 – month peak as price drop attracts customers - Physical gold premiums in India climbed to a near four-month high, driven by a rebound in demand as prices dropped, while top consumer China saw limited retail buying interest. Indian dealers charged a premium of up to \$16 an ounce over official domestic prices, from a premium of \$3 last week. Higher premiums indicate an increase in retail demand. Dealers in China, the world's top consumer of the metal, offered discounts between \$10-\$13 compared with last week's \$15-\$17 discounts. Dealers in Hong Kong charged premiums up to \$1.20 on gold, compared to last week's \$0.20 discount and \$1 premium. In Japan, bullion was sold at par to \$0.5 premium, slightly changed from last week, while traders in Singapore sold it between a \$1.10 to \$2.20 premium.

Gold ETF demand turns positive for year – to – date, says WGC - Global physically-backed gold exchange-traded funds (ETFs) saw inflows for the sixth straight month in October, with year-to-date flows turning positive for the first time this year, the World Gold Council (WGC) said. Demand was supported by North American and Asian flows, the WGC added. Gold-backed ETFs attracted \$4.3 billion of inflows in October to lift collective holdings to 3,244 tons, the WGC said. After three years of outflows, driven by high interest rates, the past six months have seen a marked reversal. Continued inflows and record gold prices lifted global assets under management to a month-end record of \$286 billion in October, the WGC said in a note. The WGC added that worldwide gold trading volumes edged higher, supported by over-the-counter (OTC) and ETF activities.

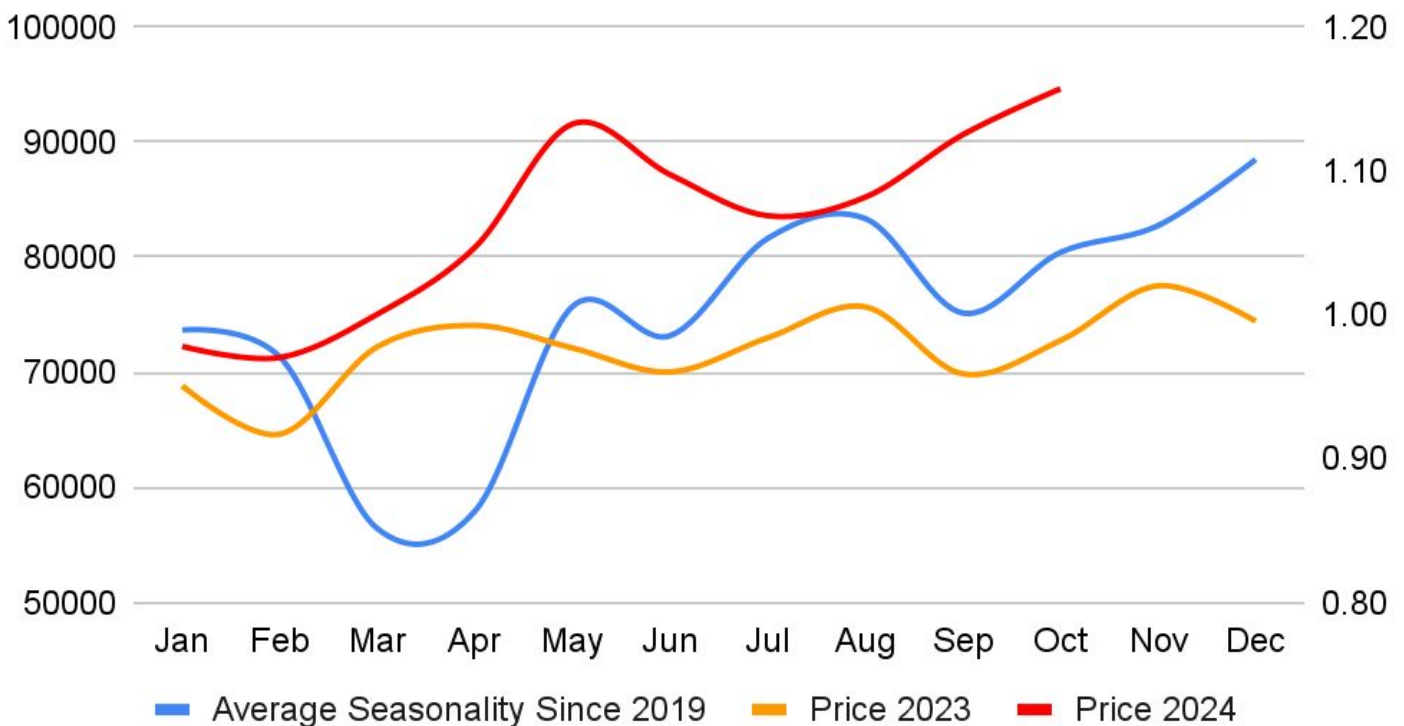
India's gold demand to hit four – year low amid price rally- India's gold demand in 2024 is likely to fall to its lowest in four years as a rally in prices to a record high is seen denting purchases during the peak festival season in the December quarter, the World Gold Council (WGC) said. Gold demand in the world's second-biggest consumer of the precious metal could stand between 700 and 750 metric tons in 2024, the lowest since 2020 and down from last year's 761 tons, Sachin Jain, CEO of WGC's Indian operations told. Indian gold consumption in the July-September quarter rose 18% to 248.3 tons, as investment demand jumped 41% and jewellery demand increased 10% in the quarter, the WGC said. India's physically backed gold exchange-traded funds (ETFs) have registered a sixth consecutive month of inflows in September and their holdings rose to 52.6 tons, up from 43.3 tons in January, WGC data showed.

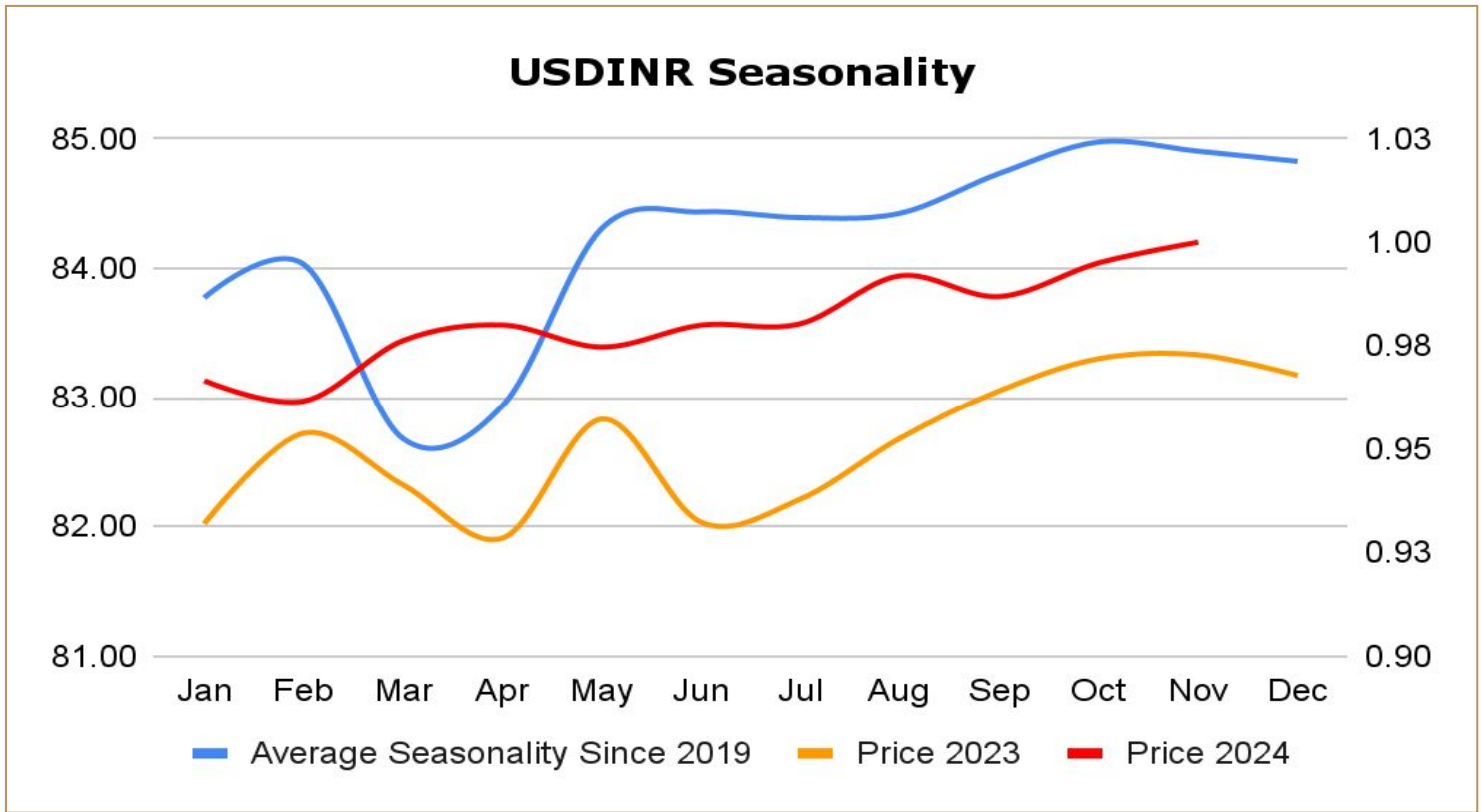
Rising investor gold demand offsets lower jewellery buying in Q3 - Global gold demand excluding over-the-counter (OTC) trading was steady year-on-year at 1,176.5 metric tons in the third quarter as higher investment activity offset reduced jewellery consumption, the WGC said. "Resurgent professional flows combined with solid bar and coin investment will offset weaker consumer demand and slower central bank buying" for gold in 2024, the WGC, said in a quarterly report. Total demand for gold, including opaque OTC trading, rose 5% to 1,313 tons, a record for a third quarter, the WGC said. It estimates the OTC flows – investment from institutional, high-net-worth investors and family offices – at 136.5 tons in July-September, up 97%. Physically-backed gold exchange traded funds (ETFs) saw the first positive quarter since the first quarter of 2022 with inflows of 95 tons, while bar and coin investment fell 9%.

Gold Seasonality



Silver Seasonality

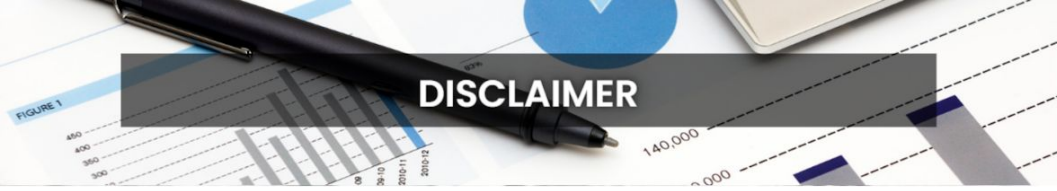




Weekly Economic Data

Date	Curr.	Data
Nov 18	EUR	German Buba President Speaks
Nov 18	EUR	Trade Balance
Nov 18	USD	NAHB Housing Market Index
Nov 19	EUR	Current Account
Nov 19	EUR	Final Core CPI y/y
Nov 19	EUR	Final CPI y/y
Nov 19	USD	Building Permits
Nov 19	USD	Housing Starts
Nov 20	EUR	German PPI m/m
Nov 20	EUR	ECB President Lagarde Speaks
Nov 20	USD	FOMC Member Bowman Speaks
Nov 21	USD	Unemployment Claims
Nov 21	USD	Philly Fed Manufacturing Index

Date	Curr.	Data
Nov 21	USD	CB Leading Index m/m
Nov 21	USD	FOMC Member Goolsbee Speaks
Nov 21	USD	FOMC Member Hammack Speaks
Nov 22	EUR	German Final GDP q/q
Nov 22	EUR	French Flash Manufacturing PMI
Nov 22	EUR	French Flash Services PMI
Nov 22	EUR	German Flash Manufacturing PMI
Nov 22	EUR	German Flash Services PMI
Nov 22	EUR	ECB President Lagarde Speaks
Nov 22	EUR	Flash Manufacturing PMI
Nov 22	EUR	Flash Services PMI
Nov 22	USD	Flash Manufacturing PMI
Nov 22	USD	Flash Services PMI



DISCLAIMER

KEDIA ADVISORY

This Report is prepared and distributed by Kedia Stocks & Commodities Research Pvt Ltd. Our SEBI REGISTRATION NUMBER - INH000006156. for information purposes only. The recommendations, if any, made herein are expressions of views and/or opinions and should not be deemed or construed to be neither advice for the purpose of purchase or sale through KSCRPL nor any solicitation or offering of any investment /trading opportunity. These information/opinions/ views are not meant to serve as a professional investment guide for the readers. No action is solicited based upon the information provided herein. Recipients of this Report should rely on information/data arising out of their own investigations. Readers are advised to seek independent professional advice and arrive at an informed trading/investment decision before executing any trades or making any investments. This Report has been prepared on the basis of publicly available information, internally developed data and other sources believed by KSCRPL to be reliable. KSCRPL or its directors, employees, affiliates or representatives do not assume any responsibility for or warrant the accuracy, completeness, adequacy and reliability of such information/opinions/ views. While due care has been taken to ensure that the disclosures and opinions given are fair and reasonable, none of the directors, employees, affiliates or representatives of KSCRPL shall be liable for any direct, indirect, special, incidental, consequential, punitive or exemplary damages, including lost profits arising in any way whatsoever from the information/opinions/views contained in this Report. The possession, circulation and/or distribution of this Report may be restricted or regulated in certain jurisdictions by appropriate laws. No action has been or will be taken by KSCRPL in any jurisdiction (other than India), where any action for such purpose (s) is required. Accordingly, this Report shall not be possessed, circulated and/ or distributed in any such country or jurisdiction unless such action is in compliance with all applicable laws and regulations of such country or jurisdiction. KSCRPL requires such a recipient to inform himself about and to observe any restrictions at his own expense, without any liability to KSCRPL. Any dispute arising out of this Report shall be subject to the exclusive jurisdiction of the Courts in India.

KEDIA ADVISORY

KEDIA STOCKS & COMMODITIES RESEARCH PVT LTD

Mumbai, India

SEBI REGISTRATION NUMBER - INH000006156

For more details, please contact: +91 93234 06035 / 96195 51022

Email: info@kediaadvisory.com

Regd.Off.: 1, 2, 3 & 4, 1st Floor, Tulip Bldg, Flower Valley Complex, Khadakpada Circle,
Kalyan-(W), Mumbai-421301